

---

## Product Datasheet

### RCAN1 Antibody (orb1245968)

**Description**

RCAN1 Antibody

**Species/Host**

Rabbit

**Reactivity**

Human, Mouse, Rat

**Conjugation**

Unconjugated

**Tested**

ELISA, WB

**Applications**
**Immunogen**

Antibody produced in rabbits immunized with a synthetic peptide corresponding a region of human RCAN1.

**Target**

RCAN1

**Preservatives**

Purified antibody supplied in 1x PBS buffer with 0.09% (w/v) sodium azide and 2% sucrose.

**Form/Appearance**

Liquid

**Concentration**

batch dependent

**Storage**

For short periods of storage (days) store at 4°C. For longer periods of storage, store RCAN1 antibody at -20°C. As with any antibody avoid repeat freeze-thaw cycles.

**Note**

For research use only

**Application notes**

RCAN1 antibody can be used for detection of RCAN1 by ELISA at 1:312500. RCAN1 antibody can be used for detection of RCAN1 by western blot at 1 µg/mL, and HRP conjugated secondary antibody should be diluted 1:50,000 - 100,000.

**Clonality**

Polyclonal

**MW**

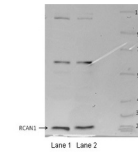
28 kDa

**Uniprot ID**
[P53805](#)
**NCBI**
[NP\\_004405](#)
**Dilution Range**

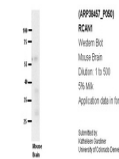
RCAN1 antibody can be used for detection of RCAN1 by ELISA at 1:312500. RCAN1 antibody can be used for detection of RCAN1 by western blot at 1 µg/mL, and HRP conjugated secondary antibody should be diluted 1:50,000 - 100,000.

**Expiration Date**

12 months from date of receipt.



Antibody used in WB on mouse osteoclasts...



Antibody used in WB on Mouse Brain at 1:...



Antibody used in WB on Human Muscle at 0...