
Product Datasheet

STAT5B Antibody (orb1245933)

Description

STAT5B Antibody

Species/Host

Rabbit

Reactivity

Human, Mouse, Rat

Conjugation

Unconjugated

Tested

ELISA, WB

Applications
Immunogen

Antibody produced in rabbits immunized with a synthetic peptide corresponding a region of human STAT5B.

Target

STAT5B

Preservatives

Purified antibody supplied in 1x PBS buffer with 0.09% (w/v) sodium azide and 2% sucrose.

Form/Appearance

Liquid

Concentration

batch dependent

Storage

For short periods of storage (days) store at 4°C. For longer periods of storage, store STAT5B antibody at -20°C. As with any antibody avoid repeat freeze-thaw cycles.

Note

For research use only

Application notes

STAT5B antibody can be used for detection of STAT5B by ELISA at 1:1562500. STAT5B antibody can be used for detection of STAT5B by western blot at 1 µg/mL, and HRP conjugated secondary antibody should be diluted 1:50,000 - 100,000.

Clonality

Polyclonal

MW

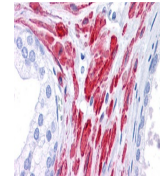
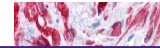
90 kDa

Uniprot ID
[P51692](#)
NCBI
[NP_036580](#)
Dilution Range

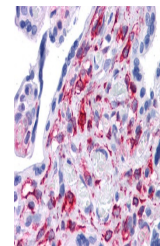
STAT5B antibody can be used for detection of STAT5B by ELISA at 1:1562500. STAT5B antibody can be used for detection of STAT5B by western blot at 1 µg/mL, and HRP conjugated secondary antibody should be diluted 1:50,000 - 100,000.

Expiration Date

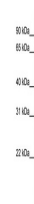
12 months from date of receipt.



Antibody used in IHC on Human prostate a...



Antibody used in IHC on Human prostate a...



Antibody used in WB on Human 293T at 1 u...