

---

## Product Datasheet

### ZMIZ1 Antibody (orb1245892)

**Description**

ZMIZ1 Antibody

**Species/Host**

Rabbit

**Reactivity**

Human, Mouse, Rat

**Conjugation**

Unconjugated

**Tested**

ELISA, WB

**Applications**
**Immunogen**

Antibody produced in rabbits immunized with a synthetic peptide corresponding a region of human ZMIZ1.

**Target**

ZMIZ1

**Preservatives**

Purified antibody supplied in 1x PBS buffer with 0.09% (w/v) sodium azide and 2% sucrose.

**Form/Appearance**

Liquid

**Concentration**

batch dependent

**Storage**

For short periods of storage (days) store at 4°C. For longer periods of storage, store ZMIZ1 antibody at -20°C. As with any antibody avoid repeat freeze-thaw cycles.

**Note**

For research use only

**Application notes**

ZMIZ1 antibody can be used for detection of ZMIZ1 by ELISA at 1:12500. ZMIZ1 antibody can be used for detection of ZMIZ1 by western blot at 1 µg/mL, and HRP conjugated secondary antibody should be diluted 1:50,000 - 100,000.

**Clonality**

Polyclonal

**MW**

115 kDa

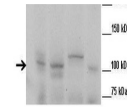
**Uniprot ID**
[Q9ULJ6](#)
**NCBI**
[NP\\_065071](#)
**Dilution Range**

ZMIZ1 antibody can be used for detection of ZMIZ1 by ELISA at 1:12500. ZMIZ1 antibody can be used for detection of ZMIZ1 by western blot at 1 µg/mL, and HRP conjugated secondary antibody should be diluted 1:50,000 - 100,000.

**Expiration Date**

12 months from date of receipt.

ZMIZ1



See Uniprot ID and Customer Feedback for more information

Antibody used in WB on Mouse at 1:1000 (...



Antibody used in WB on Human 293T at 0.2...