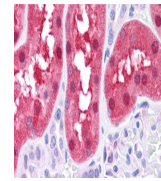
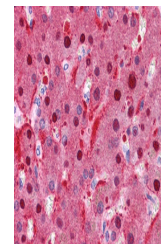

Product Datasheet

FAH Antibody (orb1245691)

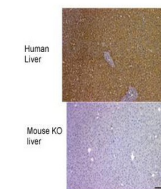
Description	FAH Antibody
Species/Host	Rabbit
Reactivity	Human, Mouse, Rat
Conjugation	Unconjugated
Tested Applications	ELISA, WB
Immunogen	Antibody produced in rabbits immunized with a synthetic peptide corresponding a region of human FAH.
Target	FAH
Preservatives	Purified antibody supplied in 1x PBS buffer with 0.09% (w/v) sodium azide and 2% sucrose.
Form/Appearance	Liquid
Concentration	batch dependent
Storage	For short periods of storage (days) store at 4°C. For longer periods of storage, store FAH antibody at -20°C. As with any antibody avoid repeat freeze-thaw cycles.
Note	For research use only
Application notes	FAH antibody can be used for detection of FAH by ELISA at 1:62500. FAH antibody can be used for detection of FAH by western blot at 1 µg/mL, and HRP conjugated secondary antibody should be diluted 1:50,000 - 100,000.
Clonality	Polyclonal
MW	46 kDa
Uniprot ID	P16930
NCBI	NP_000128
Dilution Range	FAH antibody can be used for detection of FAH by ELISA at 1:62500. FAH antibody can be used for detection of FAH by western blot at 1 µg/mL, and HRP conjugated secondary antibody should be diluted 1:50,000 - 100,000.
Expiration Date	12 months from date of receipt.



Antibody used in IHC on human liver, mou...



Antibody used in IHC on human liver, mou...



Antibody used in IHC on human liver, mou...