
Product Datasheet

LIN7C Antibody (orb1245603)

Description

LIN7C Antibody


Species/Host

Rabbit

Reactivity

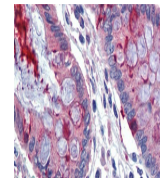
Human, Mouse, Rat

Conjugation

Unconjugated

Tested Applications

ELISA, WB



Antibody used in IHC on Human Colon at 5...

Immunogen

Antibody produced in rabbits immunized with a synthetic peptide corresponding a region of human LIN7C.

Target

LIN7C

Preservatives

Purified antibody supplied in 1x PBS buffer with 0.09% (w/v) sodium azide and 2% sucrose.

Form/Appearance

Liquid

Concentration

batch dependent

Storage

For short periods of storage (days) store at 4°C. For longer periods of storage, store LIN7C antibody at -20°C. As with any antibody avoid repeat freeze-thaw cycles.



Antibody used in WB on Human HepG2 at 1 ...

Note

For research use only

Application notes

LIN7C antibody can be used for detection of LIN7C by ELISA at 1:312500. LIN7C antibody can be used for detection of LIN7C by western blot at 1 µg/mL, and HRP conjugated secondary antibody should be diluted 1:50,000 - 100,000.

Clonality

Polyclonal

MW

22 kDa

Uniprot ID
[Q9NUP9](#)
NCBI
[NP_060832](#)
Dilution Range

LIN7C antibody can be used for detection of LIN7C by ELISA at 1:312500. LIN7C antibody can be used for detection of LIN7C by western blot at 1 µg/mL, and HRP conjugated secondary antibody should be diluted 1:50,000 - 100,000.

Expiration Date

12 months from date of receipt.