

---

## Product Datasheet

### SLC27A2 Antibody (orb1245506)

**Description**

SLC27A2 Antibody

**Species/Host**

Rabbit

**Reactivity**

Human, Mouse, Rat

**Conjugation**

Unconjugated

**Tested**

ELISA, WB

**Applications**
**Immunogen**

Antibody produced in rabbits immunized with a synthetic peptide corresponding a region of human SLC27A2.

**Target**

SLC27A2

**Preservatives**

Purified antibody supplied in 1x PBS buffer with 0.09% (w/v) sodium azide and 2% sucrose.

**Form/Appearance**

Liquid

**Concentration**

batch dependent

**Storage**

For short periods of storage (days) store at 4°C. For longer periods of storage, store SLC27A2 antibody at -20°C. As with any antibody avoid repeat freeze-thaw cycles.

**Note**

For research use only

**Application notes**

SLC27A2 antibody can be used for detection of SLC27A2 by ELISA at 1:62500. SLC27A2 antibody can be used for detection of SLC27A2 by western blot at 1 µg/mL, and HRP conjugated secondary antibody should be diluted 1:50,000 - 100,000.

**Clonality**

Polyclonal

**MW**

70 kDa

**Uniprot ID**
[O14975](#)
**NCBI**
[NP\\_003636](#)
**Dilution Range**

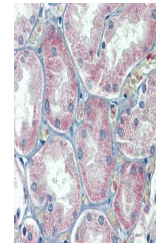
SLC27A2 antibody can be used for detection of SLC27A2 by ELISA at 1:62500. SLC27A2 antibody can be used for detection of SLC27A2 by western blot at 1 µg/mL, and HRP conjugated secondary antibody should be diluted 1:50,000 - 100,000.

**Expiration Date**

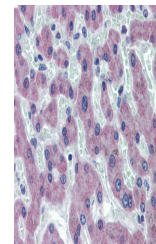
12 months from date of receipt.



Antibody used in WB on Human HeLa at 1 u...



Antibody used in IHC on Human Liver.



Antibody used in IHC on Human Liver.