
Product Datasheet

G6PC Antibody (orb1245465)

Description

G6PC Antibody

Species/Host

Rabbit

Reactivity

Canine, Human

Conjugation

Unconjugated

Tested

ELISA, WB

Applications
Immunogen

Antibody produced in rabbits immunized with a synthetic peptide corresponding a region of human G6PC.

Target

G6PC

Preservatives

Purified antibody supplied in 1x PBS buffer with 0.09% (w/v) sodium azide and may contain up to 2% sucrose.

Form/Appearance

Liquid

Concentration

batch dependent

Storage

For short periods of storage (days) store at 4°C. For longer periods of storage, store G6PC antibody at -20°C. As with any antibody avoid repeat freeze-thaw cycles.

Note

For research use only

Application notes

G6PC antibody can be used for detection of G6PC by ELISA at 1:62500. G6PC antibody can be used for detection of G6PC by western blot at 1 µg/mL, and HRP conjugated secondary antibody should be diluted 1:50,000 - 100,000.

Clonality

Polyclonal

MW

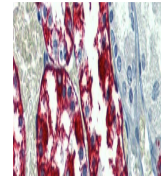
40 kDa

Uniprot ID
[P35575](#)
NCBI
[NP_000142](#)
Dilution Range

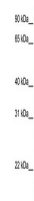
G6PC antibody can be used for detection of G6PC by ELISA at 1:62500. G6PC antibody can be used for detection of G6PC by western blot at 1 µg/mL, and HRP conjugated secondary antibody should be diluted 1:50,000 - 100,000.

Expiration Date

12 months from date of receipt.



Antibody used in IHC on Human kidney.



Antibody used in WB on Human Fetal Lung ...