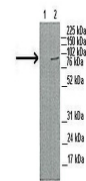

Product Datasheet

CPT1A Antibody (orb1245396)

Description	CPT1A Antibody
Species/Host	Rabbit
Reactivity	Human
Conjugation	Unconjugated
Tested Applications	ELISA, WB
Immunogen	Antibody produced in rabbits immunized with a synthetic peptide corresponding a region of human CPT1A.
Target	CPT1A
Preservatives	Purified antibody supplied in 1x PBS buffer with 0.09% (w/v) sodium azide and 2% sucrose.
Form/Appearance	Liquid
Concentration	batch dependent
Storage	For short periods of storage (days) store at 4°C. For longer periods of storage, store CPT1A antibody at -20°C. As with any antibody avoid repeat freeze-thaw cycles.
Note	For research use only
Application notes	CPT1A antibody can be used for detection of CPT1A by ELISA at 1:312500. CPT1A antibody can be used for detection of CPT1A by western blot at 1 µg/mL, and HRP conjugated secondary antibody should be diluted 1:50,000 - 100,000.
Clonality	Polyclonal
MW	86 kDa
Uniprot ID	P50416
NCBI	NP_001027017
Dilution Range	CPT1A antibody can be used for detection of CPT1A by ELISA at 1:312500. CPT1A antibody can be used for detection of CPT1A by western blot at 1 µg/mL, and HRP conjugated secondary antibody should be diluted 1:50,000 - 100,000.
Expiration Date	12 months from date of receipt.

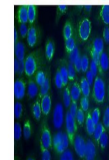



Antibody used in WB on Human 293T at 0.2...

See Immunoblot Data and Customer Feedback for more information

Antibody used in WB on Human capan1, HPA...

Green: CPT1A
Blue: DAPI
See IHC Data and Customer Feedback for more information

Antibody used in IHC on Human Capan1 at ...