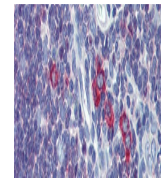

Product Datasheet

TFR2 Antibody (orb1245357)

Description	TFR2 Antibody
Species/Host	Rabbit
Reactivity	Human, Mouse, Rat
Conjugation	Unconjugated
Tested Applications	ELISA, WB
Immunogen	Antibody produced in rabbits immunized with a synthetic peptide corresponding a region of human TFR2.
Target	TFR2
Preservatives	Purified antibody supplied in 1x PBS buffer with 0.09% (w/v) sodium azide and 2% sucrose.
Form/Appearance	Liquid
Concentration	batch dependent
Storage	For short periods of storage (days) store at 4°C. For longer periods of storage, store TFR2 antibody at -20°C. As with any antibody avoid repeat freeze-thaw cycles.
Note	For research use only
Application notes	TFR2 antibody can be used for detection of TFR2 by ELISA at 1:62500. TFR2 antibody can be used for detection of TFR2 by western blot at 1 µg/mL, and HRP conjugated secondary antibody should be diluted 1:50,000 - 100,000.
Clonality	Polyclonal
MW	89 kDa
Uniprot ID	Q9UP52
NCBI	NP_003218
Dilution Range	TFR2 antibody can be used for detection of TFR2 by ELISA at 1:62500. TFR2 antibody can be used for detection of TFR2 by western blot at 1 µg/mL, and HRP conjugated secondary antibody should be diluted 1:50,000 - 100,000.
Expiration Date	12 months from date of receipt.



Antibody used in IHC on Human Thymus at ...



Antibody used in WB on Human HeLa at 0.2...