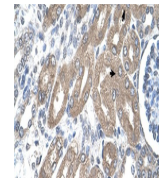
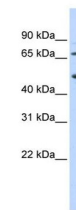

Product Datasheet

TDO2 Antibody (orb1245335)

| | |
|----------------------------|---|
| Description | TDO2 Antibody |
| Species/Host | Rabbit |
| Reactivity | Human |
| Conjugation | Unconjugated |
| Tested Applications | ELISA, WB |
| Immunogen | Antibody produced in rabbits immunized with a synthetic peptide corresponding a region of human TDO2. |
| Target | TDO2 |
| Preservatives | Purified antibody supplied in 1x PBS buffer with 0.09% (w/v) sodium azide and 2% sucrose. |
| Form/Appearance | Liquid |
| Concentration | batch dependent |
| Storage | For short periods of storage (days) store at 4°C. For longer periods of storage, store TDO2 antibody at -20°C. As with any antibody avoid repeat freeze-thaw cycles. |
| Note | For research use only |
| Application notes | TDO2 antibody can be used for detection of TDO2 by ELISA at 1:312500. TDO2 antibody can be used for detection of TDO2 by western blot at 1 µg/mL, and HRP conjugated secondary antibody should be diluted 1:50,000 - 100,000. |
| Clonality | Polyclonal |
| MW | 48 kDa |
| Uniprot ID | P48775 |
| NCBI | NP_005642 |
| Dilution Range | TDO2 antibody can be used for detection of TDO2 by ELISA at 1:312500. TDO2 antibody can be used for detection of TDO2 by western blot at 1 µg/mL, and HRP conjugated secondary antibody should be diluted 1:50,000 - 100,000. |
| Expiration Date | 12 months from date of receipt. |



Antibody used in IHC on Human Kidney at ...



Antibody used in WB on Human Jurkat 0.2-...