

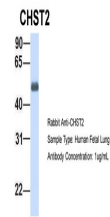
Product Datasheet

CHST2 Antibody (orb1245268)

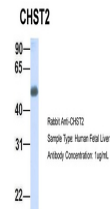
Description	CHST2 Antibody
Species/Host	Rabbit
Reactivity	Human, Mouse, Rat
Conjugation	Unconjugated
Tested Applications	ELISA, WB
Immunogen	Antibody produced in rabbits immunized with a synthetic peptide corresponding a region of human CHST2.
Target	CHST2
Preservatives	Purified antibody supplied in 1x PBS buffer with 0.09% (w/v) sodium azide and 2% sucrose.
Form/Appearance	Liquid
Concentration	batch dependent
Storage	For short periods of storage (days) store at 4°C. For longer periods of storage, store CHST2 antibody at -20°C. As with any antibody avoid repeat freeze-thaw cycles.
Note	For research use only
Application notes	CHST2 antibody can be used for detection of CHST2 by ELISA at 1:62500. CHST2 antibody can be used for detection of CHST2 by western blot at 1 µg/mL, and HRP conjugated secondary antibody should be diluted 1:50,000 - 100,000.
Clonality	Polyclonal
MW	58 kDa
Uniprot ID	Q9Y4C5
NCBI	NP_004258
Dilution Range	CHST2 antibody can be used for detection of CHST2 by ELISA at 1:62500. CHST2 antibody can be used for detection of CHST2 by western blot at 1 µg/mL, and HRP conjugated secondary antibody should be diluted 1:50,000 - 100,000.
Expiration Date	12 months from date of receipt.



Antibody used in WB on Human 293T at 0.2...



Antibody used in WB on Hum. Fetal Lung a...



Antibody used in WB on Hum. Fetal Liver ...