
Product Datasheet

SIGIRR Antibody (orb1244970)

Description

SIGIRR Antibody

Species/Host

Rabbit

Reactivity

Human, Mouse, Rat

Conjugation

Unconjugated

Tested

ELISA, WB

Applications
Immunogen

Antibody produced in rabbits immunized with a synthetic peptide corresponding a region of human SIGIRR.

Target

SIGIRR

Preservatives

Purified antibody supplied in 1x PBS buffer with 0.09% (w/v) sodium azide and 2% sucrose.

Form/Appearance

Liquid

Concentration

batch dependent

Storage

For short periods of storage (days) store at 4°C. For longer periods of storage, store SIGIRR antibody at -20°C. As with any antibody avoid repeat freeze-thaw cycles.

Note

For research use only

Application notes

SIGIRR antibody can be used for detection of SIGIRR by ELISA at 1:62500. SIGIRR antibody can be used for detection of SIGIRR by western blot at 1 µg/mL, and HRP conjugated secondary antibody should be diluted 1:50,000 - 100,000.

Clonality

Polyclonal

MW

25 kDa

Uniprot ID
[Q6IA17](#)
NCBI
[XP_001129013](#)
Dilution Range

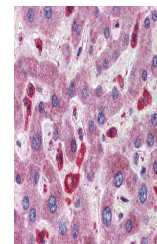
SIGIRR antibody can be used for detection of SIGIRR by ELISA at 1:62500. SIGIRR antibody can be used for detection of SIGIRR by western blot at 1 µg/mL, and HRP conjugated secondary antibody should be diluted 1:50,000 - 100,000.

Expiration Date

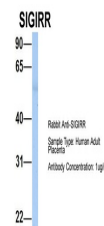
12 months from date of receipt.



Antibody used in WB on Human Jurkat 0.2-...



Antibody used in IHC on Human Liver.



Antibody used in WB on Hum. Adult Placen...