
Product Datasheet

CYP11A1 Antibody (orb1244782)

Description

CYP11A1 Antibody

Species/Host

Rabbit

Reactivity

Human

Conjugation

Unconjugated

Tested

ELISA, WB

Applications
Immunogen

Antibody produced in rabbits immunized with a synthetic peptide corresponding a region of human CYP11A1.

Target

CYP11A1

Preservatives

Purified antibody supplied in 1x PBS buffer with 0.09% (w/v) sodium azide and 2% sucrose.

Form/Appearance

Liquid

Concentration

batch dependent

Storage

For short periods of storage (days) store at 4°C. For longer periods of storage, store CYP11A1 antibody at -20°C. As with any antibody avoid repeat freeze-thaw cycles.

Note

For research use only

Application notes

CYP11A1 antibody can be used for detection of CYP11A1 by ELISA at 1:1562500. CYP11A1 antibody can be used for detection of CYP11A1 by western blot at 1 µg/mL, and HRP conjugated secondary antibody should be diluted 1:50,000 - 100,000.

Clonality

Polyclonal

MW

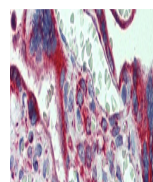
57 kDa

Uniprot ID
[P05108](#)
NCBI
[NP_000772](#)
Dilution Range

CYP11A1 antibody can be used for detection of CYP11A1 by ELISA at 1:1562500. CYP11A1 antibody can be used for detection of CYP11A1 by western blot at 1 µg/mL, and HRP conjugated secondary antibody should be diluted 1:50,000 - 100,000.

Expiration Date

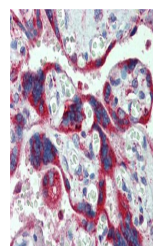
12 months from date of receipt.



Antibody used in IHC on Human Placenta a...



Antibody used in WB on Human HeLa at 1 u...



Antibody used in IHC on Human HK2.