
Product Datasheet

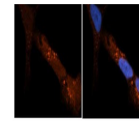
PDIA6 Antibody (orb1244775)

Description

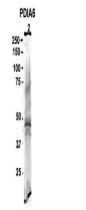
PDIA6 Antibody

PDIA6

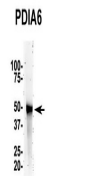
Species/Host	Rabbit
Reactivity	Human, Mouse, Rat
Conjugation	Unconjugated
Tested Applications	ELISA, WB
Immunogen	Antibody produced in rabbits immunized with a synthetic peptide corresponding a region of human PDIA6.
Target	PDIA6
Preservatives	Purified antibody supplied in 1x PBS buffer with 0.09% (w/v) sodium azide and 2% sucrose.
Form/Appearance	Liquid
Concentration	batch dependent
Storage	For short periods of storage (days) store at 4°C. For longer periods of storage, store PDIA6 antibody at -20°C. As with any antibody avoid repeat freeze-thaw cycles.
Note	For research use only
Application notes	PDIA6 antibody can be used for detection of PDIA6 by ELISA at 1:62500. PDIA6 antibody can be used for detection of PDIA6 by western blot at 1 µg/mL, and HRP conjugated secondary antibody should be diluted 1:50,000 - 100,000.
Clonality	Polyclonal
MW	48 kDa
Uniprot ID	Q15084
NCBI	NP_005733
Dilution Range	PDIA6 antibody can be used for detection of PDIA6 by ELISA at 1:62500. PDIA6 antibody can be used for detection of PDIA6 by western blot at 1 µg/mL, and HRP conjugated secondary antibody should be diluted 1:50,000 - 100,000.
Expiration Date	12 months from date of receipt.


See Immunofluorescence (IF) and Western Blot (WB) for more information.

Antibody used in IHC on Mouse Brain at 1...



Antibody used in WB on Mouse Brain at 2 ...


See Immunofluorescence (IF) and Western Blot (WB) for more information.

Antibody used in WB on Mouse Brain.