
Product Datasheet

SSX2IP Antibody (orb1244588)

Description

SSX2IP Antibody

Species/Host

Rabbit

Reactivity

Human

Conjugation

Unconjugated

Tested

ELISA, WB

Applications
Immunogen

Antibody produced in rabbits immunized with a synthetic peptide corresponding a region of human SSX2IP.

Target

SSX2IP

Preservatives

Purified antibody supplied in 1x PBS buffer with 0.09% (w/v) sodium azide and 2% sucrose.

Form/Appearance

Liquid

Concentration

batch dependent

Storage

For short periods of storage (days) store at 4°C. For longer periods of storage, store SSX2IP antibody at -20°C. As with any antibody avoid repeat freeze-thaw cycles.

Note

For research use only

Application notes

SSX2IP antibody can be used for detection of SSX2IP by ELISA at 1:312500. SSX2IP antibody can be used for detection of SSX2IP by western blot at 1 µg/mL, and HRP conjugated secondary antibody should be diluted 1:50,000 - 100,000.

Clonality

Polyclonal

MW

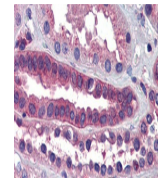
68 kDa

Uniprot ID
[Q9Y2D8](#)
NCBI
[NP_054740](#)
Dilution Range

SSX2IP antibody can be used for detection of SSX2IP by ELISA at 1:312500. SSX2IP antibody can be used for detection of SSX2IP by western blot at 1 µg/mL, and HRP conjugated secondary antibody should be diluted 1:50,000 - 100,000.

Expiration Date

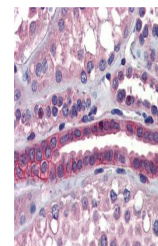
12 months from date of receipt.



Antibody used in IHC on Human kidney at ...



Antibody used in WB on Human 721_B at 1 ...



Antibody used in IHC on Human kidney.