

---

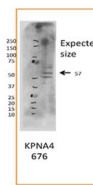
## Product Datasheet

### KPNA4 Antibody (orb1244494)

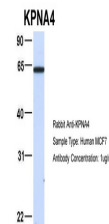
Description	KPNA4 Antibody
<b>Species/Host</b>	Rabbit
<b>Reactivity</b>	Human, Mouse, Rat
<b>Conjugation</b>	Unconjugated
<b>Tested Applications</b>	ELISA, WB
<b>Immunogen</b>	Antibody produced in rabbits immunized with a synthetic peptide corresponding a region of human KPNA4.
<b>Target</b>	KPNA4
<b>Preservatives</b>	Purified antibody supplied in 1x PBS buffer with 0.09% (w/v) sodium azide and 2% sucrose.
<b>Form/Appearance</b>	Liquid
<b>Concentration</b>	batch dependent
<b>Storage</b>	For short periods of storage (days) store at 4°C. For longer periods of storage, store KPNA4 antibody at -20°C. As with any antibody avoid repeat freeze-thaw cycles.
<b>Note</b>	For research use only
<b>Application notes</b>	KPNA4 antibody can be used for detection of KPNA4 by ELISA at 1:1562500. KPNA4 antibody can be used for detection of KPNA4 by western blot at 1 µg/mL, and HRP conjugated secondary antibody should be diluted 1:50,000 - 100,000.
<b>Clonality</b>	Polyclonal
<b>MW</b>	58 kDa
<b>Uniprot ID</b>	<a href="#">O00629</a>
<b>NCBI</b>	<a href="#">NP_002259</a>
<b>Dilution Range</b>	KPNA4 antibody can be used for detection of KPNA4 by ELISA at 1:1562500. KPNA4 antibody can be used for detection of KPNA4 by western blot at 1 µg/mL, and HRP conjugated secondary antibody should be diluted 1:50,000 - 100,000.
<b>Expiration Date</b>	12 months from date of receipt.



Antibody used in WB on Human HeLa at 0.2...



Antibody used in WB on Mouse Neuro2A at ...



Antibody used in WB on Human MCF7 at 1 u...