

---

## Product Datasheet

### CCT5 Antibody (orb1244474)

**Description**

CCT5 Antibody

**Species/Host**

Rabbit

**Reactivity**

Human, Mouse, Rat

**Conjugation**

Unconjugated

**Tested Applications**

ELISA, WB

**Immunogen**

Antibody produced in rabbits immunized with a synthetic peptide corresponding a region of human CCT5.

**Target**

CCT5

**Preservatives**

Purified antibody supplied in 1x PBS buffer with 0.09% (w/v) sodium azide and 2% sucrose.

**Form/Appearance**

Liquid

**Concentration**

batch dependent

**Storage**

For short periods of storage (days) store at 4°C. For longer periods of storage, store CCT5 antibody at -20°C. As with any antibody avoid repeat freeze-thaw cycles.

**Note**

For research use only

**Application notes**

CCT5 antibody can be used for detection of CCT5 by ELISA at 1:12500. CCT5 antibody can be used for detection of CCT5 by western blot at 1 µg/mL, and HRP conjugated secondary antibody should be diluted 1:50,000 - 100,000.

**Clonality**

Polyclonal

**MW**

60 kDa

**Uniprot ID**
[P48643](#)
**NCBI**
[NP\\_036205](#)
**Dilution Range**

CCT5 antibody can be used for detection of CCT5 by ELISA at 1:12500. CCT5 antibody can be used for detection of CCT5 by western blot at 1 µg/mL, and HRP conjugated secondary antibody should be diluted 1:50,000 - 100,000.

**Expiration Date**

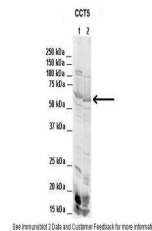
12 months from date of receipt.



Antibody used in WB on Human Brain at 0....



Antibody used in WB on Mouse, Rat 2 ug/m...



Antibody used in WB on Human HEK293 at 2...