
Product Datasheet

HSPA2 Antibody (orb1244398)

Description

HSPA2 Antibody

Species/Host

Rabbit

Reactivity

Human, Mouse

Conjugation

Unconjugated

Tested

ELISA, WB

Applications

Antibody produced in rabbits immunized with a synthetic peptide corresponding a region of human HSPA2.

Immunogen
Target

HSPA2

Preservatives

Purified antibody supplied in 1x PBS buffer with 0.09% (w/v) sodium azide and 2% sucrose.

Form/Appearance

Liquid

Concentration

batch dependent

Storage

For short periods of storage (days) store at 4°C. For longer periods of storage, store HSPA2 antibody at -20°C. As with any antibody avoid repeat freeze-thaw cycles.

Note

For research use only

Application notes

HSPA2 antibody can be used for detection of HSPA2 by ELISA at 1:62500. HSPA2 antibody can be used for detection of HSPA2 by western blot at 1 µg/mL, and HRP conjugated secondary antibody should be diluted 1:50,000 - 100,000.

Clonality

Polyclonal

MW

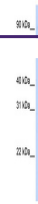
70 kDa

Uniprot ID
[P54652](#)
NCBI
[NP_068814](#)
Dilution Range

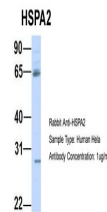
HSPA2 antibody can be used for detection of HSPA2 by ELISA at 1:62500. HSPA2 antibody can be used for detection of HSPA2 by western blot at 1 µg/mL, and HRP conjugated secondary antibody should be diluted 1:50,000 - 100,000.

Expiration Date

12 months from date of receipt.



Antibody used in WB on Human Jurkat 0.2-...



Antibody used in WB on Human HeLa at 1 u...