
Product Datasheet

RHOC Antibody (orb1244337)

Description	RHOC Antibody	
Species/Host	Rabbit	
Reactivity	C. elegans, Canine, Drosophila, Human, Mouse, Rat	
Conjugation	Unconjugated	
Tested Applications	ELISA, WB	
Immunogen	Antibody produced in rabbits immunized with a synthetic peptide corresponding a region of human RHOC.	
Target	RHOC	
Preservatives	Purified antibody supplied in 1x PBS buffer with 0.09% (w/v) sodium azide and 2% sucrose.	
Form/Appearance	Liquid	
Concentration	batch dependent	
Storage	For short periods of storage (days) store at 4°C. For longer periods of storage, store RHOC antibody at -20°C. As with any antibody avoid repeat freeze-thaw cycles.	
Note	For research use only	
Application notes	RHOC antibody can be used for detection of RHOC by ELISA at 1:62500. RHOC antibody can be used for detection of RHOC by western blot at 1 µg/mL, and HRP conjugated secondary antibody should be diluted 1:50,000 - 100,000.	
Clonality	Polyclonal	
MW	22 kDa	
Uniprot ID	P08134	
NCBI	NP_786886	
Dilution Range	RHOC antibody can be used for detection of RHOC by ELISA at 1:62500. RHOC antibody can be used for detection of RHOC by western blot at 1 µg/mL, and HRP conjugated secondary antibody should be diluted 1:50,000 - 100,000.	
Expiration Date	12 months from date of receipt.	



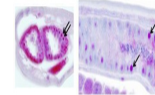
Antibody used in WB on Human Liver at 0....



See Immunoblot 2 Data and Customer Feedback for more information

Antibody used in WB on Brugia malayi ex...

RHOC



See IHC 1 Data and Customer Feedback for more information

Antibody used in IHC on Brugia malayi i...