
Product Datasheet

MYL6 Antibody (orb1244299)

Description

MYL6 Antibody

Species/Host

Rabbit

Reactivity

Human, Mouse, Rat

Conjugation

Unconjugated

Tested

ELISA, WB

Applications
Immunogen

Antibody produced in rabbits immunized with a synthetic peptide corresponding a region of human MYL6.

Target

MYL6

Preservatives

Purified antibody supplied in 1x PBS buffer with 0.09% (w/v) sodium azide and 2% sucrose.

Form/Appearance

Liquid

Concentration

batch dependent

Storage

For short periods of storage (days) store at 4°C. For longer periods of storage, store MYL6 antibody at -20°C. As with any antibody avoid repeat freeze-thaw cycles.

Note

For research use only

Application notes

MYL6 antibody can be used for detection of MYL6 by ELISA at 1:1562500. MYL6 antibody can be used for detection of MYL6 by western blot at 1 µg/mL, and HRP conjugated secondary antibody should be diluted 1:50,000 - 100,000.

Clonality

Polyclonal

MW

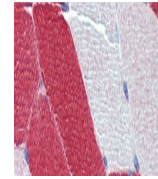
17 kDa

Uniprot ID
[P60660](#)
NCBI
[NP_524147](#)
Dilution Range

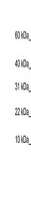
MYL6 antibody can be used for detection of MYL6 by ELISA at 1:1562500. MYL6 antibody can be used for detection of MYL6 by western blot at 1 µg/mL, and HRP conjugated secondary antibody should be diluted 1:50,000 - 100,000.

Expiration Date

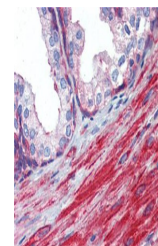
12 months from date of receipt.



Antibody used in IHC on Human Skeletal M...



Antibody used in WB on Human HepG2 at 1 ...



Antibody used in IHC on Human Prostate.