
Product Datasheet

KDM8 Antibody (orb1244271)

Description

KDM8 Antibody

Species/Host

Rabbit

Reactivity

Human, Mouse, Rat

Conjugation

Unconjugated

Tested

ELISA, WB

Applications

Antibody produced in rabbits immunized with a synthetic peptide corresponding a region of human JMJD5.

Target

KDM8

Preservatives

Purified antibody supplied in 1x PBS buffer with 0.09% (w/v) sodium azide and 2% sucrose.

Form/Appearance

Liquid

Concentration

batch dependent

Storage

For short periods of storage (days) store at 4°C. For longer periods of storage, store JMJD5 antibody at -20°C. As with any antibody avoid repeat freeze-thaw cycles.

Note

For research use only

Application notes

JMJD5 antibody can be used for detection of JMJD5 by ELISA at 1:62500. JMJD5 antibody can be used for detection of JMJD5 by western blot at 1 µg/mL, and HRP conjugated secondary antibody should be diluted 1:50,000 - 100,000.

Clonality

Polyclonal

MW

47 kDa

Uniprot ID
[Q8N371](#)
NCBI
[NP_079049](#)
Dilution Range

JMJD5 antibody can be used for detection of JMJD5 by ELISA at 1:62500. JMJD5 antibody can be used for detection of JMJD5 by western blot at 1 µg/mL, and HRP conjugated secondary antibody should be diluted 1:50,000 - 100,000.

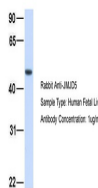
Expiration Date

12 months from date of receipt.

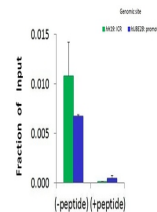


Antibody used in WB on Human Liver at 0....

JMJD5



Antibody used in WB on Hum. Fetal Liver ...



Antibody used in CHIP on HCT116 Cells.