
Product Datasheet

SYCP3 Antibody (orb1244253)

Description

SYCP3 Antibody

Species/Host

Rabbit

Reactivity

Human

Conjugation

Unconjugated

Tested

ELISA, WB

Applications
Immunogen

Antibody produced in rabbits immunized with a synthetic peptide corresponding a region of human SYCP3.

Target

SYCP3

Preservatives

Purified antibody supplied in 1x PBS buffer with 0.09% (w/v) sodium azide and 2% sucrose.

Form/Appearance

Liquid

Concentration

batch dependent

Storage

For short periods of storage (days) store at 4°C. For longer periods of storage, store SYCP3 antibody at -20°C. As with any antibody avoid repeat freeze-thaw cycles.

Note

For research use only

Application notes

SYCP3 antibody can be used for detection of SYCP3 by ELISA at 1:312500. SYCP3 antibody can be used for detection of SYCP3 by western blot at 1 µg/mL, and HRP conjugated secondary antibody should be diluted 1:50,000 - 100,000.

Clonality

Polyclonal

MW

26 kDa

Uniprot ID
[Q8IZU3](#)
NCBI
[NP_710161](#)
Dilution Range

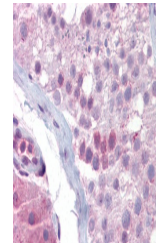
SYCP3 antibody can be used for detection of SYCP3 by ELISA at 1:312500. SYCP3 antibody can be used for detection of SYCP3 by western blot at 1 µg/mL, and HRP conjugated secondary antibody should be diluted 1:50,000 - 100,000.

Expiration Date

12 months from date of receipt.



Antibody used in WB on Human Jurkat 0.2-...



Antibody used in IHC on Human Testis at ...