

## Product Datasheet

### ACTN1 Antibody (orb1244248)

**Description**

ACTN1 Antibody

**Species/Host**

Rabbit

**Reactivity**

Human, Mouse, Rat

**Conjugation**

Unconjugated

**Tested Applications**

ELISA, WB

**Applications**
**Immunogen**

Antibody produced in rabbits immunized with a synthetic peptide corresponding to a region of human Actin alpha 1.

**Target**

ACTN1

**Preservatives**

Purified antibody supplied in 1x PBS buffer with 0.09% (w/v) sodium azide and 2% sucrose.

**Form/Appearance**

Liquid

**Concentration**

batch dependent

**Storage**

For short periods of storage (days) store at 4°C. For longer periods of storage, store Actin alpha 1 antibody at -20°C. As with any antibody avoid repeat freeze-thaw cycles.

**Note**

For research use only

**Application notes**

Actin alpha 1 antibody can be used for detection of Actin alpha 1 by ELISA at 1:312500. Actin alpha 1 antibody can be used for detection of Actin alpha 1 by western blot at 1 µg/mL, and HRP conjugated secondary antibody should be diluted 1:50,000 - 100,000.

**Clonality**

Polyclonal

**MW**

103 kDa

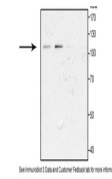
**Uniprot ID**
[P12814](#)
**NCBI**
[NP\\_001093](#)
**Dilution Range**

Actin alpha 1 antibody can be used for detection of Actin alpha 1 by ELISA at 1:312500. Actin alpha 1 antibody can be used for detection of Actin alpha 1 by western blot at 1 µg/mL, and HRP conjugated secondary antibody should be diluted 1:50,000 - 100,000.

**Expiration Date**

12 months from date of receipt.

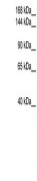
ACTN1



See product label and Certificate of Analysis for more information.

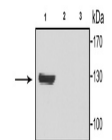
Antibody used in WB on Rat Cortical Neur...

ACTN1



Antibody used in WB on Human 293T at 0.2...

ACTN1



See product label and Certificate of Analysis for more information.

Antibody used in WB on Human HEK293 at 1...