

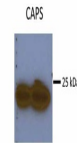
## Product Datasheet

### CAPS Antibody (orb1244242)

<b>Description</b>	CAPS Antibody
<b>Species/Host</b>	Rabbit
<b>Reactivity</b>	Human
<b>Conjugation</b>	Unconjugated
<b>Tested Applications</b>	ELISA, WB
<b>Immunogen</b>	Antibody produced in rabbits immunized with a synthetic peptide corresponding a region of human CAPS.
<b>Target</b>	CAPS
<b>Preservatives</b>	Purified antibody supplied in 1x PBS buffer with 0.09% (w/v) sodium azide and 2% sucrose.
<b>Form/Appearance</b>	Liquid
<b>Concentration</b>	batch dependent
<b>Storage</b>	For short periods of storage (days) store at 4°C. For longer periods of storage, store CAPS antibody at -20°C. As with any antibody avoid repeat freeze-thaw cycles.
<b>Note</b>	For research use only
<b>Application notes</b>	CAPS antibody can be used for detection of CAPS by ELISA at 1:312500. CAPS antibody can be used for detection of CAPS by western blot at 1 µg/mL, and HRP conjugated secondary antibody should be diluted 1:50,000 - 100,000.
<b>Clonality</b>	Polyclonal
<b>MW</b>	21 kDa
<b>Uniprot ID</b>	<a href="#">Q13938</a>
<b>NCBI</b>	<a href="#">NP_004049</a>
<b>Dilution Range</b>	CAPS antibody can be used for detection of CAPS by ELISA at 1:312500. CAPS antibody can be used for detection of CAPS by western blot at 1 µg/mL, and HRP conjugated secondary antibody should be diluted 1:50,000 - 100,000.
<b>Expiration Date</b>	12 months from date of receipt.



Antibody used in WB on Human 293T at 0.2...



Antibody used in WB on Human Huh7, HepG2...