

---

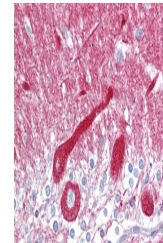
## Product Datasheet

### CPE Antibody (orb1244240)

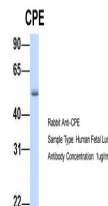
Description	CPE Antibody
<b>Species/Host</b>	Rabbit
<b>Reactivity</b>	Human, Mouse, Rat
<b>Conjugation</b>	Unconjugated
<b>Tested Applications</b>	ELISA, WB
<b>Immunogen</b>	Antibody produced in rabbits immunized with a synthetic peptide corresponding a region of human CPE.
<b>Target</b>	CPE
<b>Preservatives</b>	Purified antibody supplied in 1x PBS buffer with 0.09% (w/v) sodium azide and 2% sucrose.
<b>Form/Appearance</b>	Liquid
<b>Concentration</b>	batch dependent
<b>Storage</b>	For short periods of storage (days) store at 4°C. For longer periods of storage, store CPE antibody at -20°C. As with any antibody avoid repeat freeze-thaw cycles.
<b>Note</b>	For research use only
<b>Application notes</b>	CPE antibody can be used for detection of CPE by ELISA at 1:312500. CPE antibody can be used for detection of CPE by western blot at 1 µg/mL, and HRP conjugated secondary antibody should be diluted 1:50,000 - 100,000.
<b>Clonality</b>	Polyclonal
<b>MW</b>	52 kDa
<b>Uniprot ID</b>	<a href="#">P16870</a>
<b>NCBI</b>	<a href="#">NP_001864</a>
<b>Dilution Range</b>	CPE antibody can be used for detection of CPE by ELISA at 1:312500. CPE antibody can be used for detection of CPE by western blot at 1 µg/mL, and HRP conjugated secondary antibody should be diluted 1:50,000 - 100,000.
<b>Expiration Date</b>	12 months from date of receipt.



Antibody used in WB on Human MCF7 at 0.2...



Antibody used in IHC on Human Brain at 5...



Antibody used in WB on Hum. Fetal Lung a...