

---

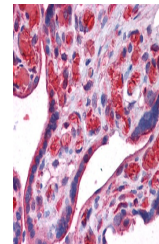
## Product Datasheet

### UCHL3 Antibody (orb1244199)

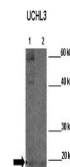
| Description                | UCHL3 Antibody   |
|----------------------------|--|
| <b>Species/Host</b>        | Rabbit   |
| <b>Reactivity</b>          | Human, Mouse, Rat  |
| <b>Conjugation</b>         | Unconjugated   |
| <b>Tested Applications</b> | ELISA, WB  |
| <b>Immunogen</b>           | Antibody produced in rabbits immunized with a synthetic peptide corresponding a region of human UCHL3.   |
| <b>Target</b>              | UCHL3  |
| <b>Preservatives</b>       | Purified antibody supplied in 1x PBS buffer with 0.09% (w/v) sodium azide and 2% sucrose.  |
| <b>Form/Appearance</b>     | Liquid   |
| <b>Concentration</b>       | batch dependent  |
| <b>Storage</b>             | For short periods of storage (days) store at 4°C. For longer periods of storage, store UCHL3 antibody at -20°C. As with any antibody avoid repeat freeze-thaw cycles.  |
| <b>Note</b>                | For research use only  |
| <b>Application notes</b>   | UCHL3 antibody can be used for detection of UCHL3 by ELISA at 1:1562500. UCHL3 antibody can be used for detection of UCHL3 by western blot at 1 µg/mL, and HRP conjugated secondary antibody should be diluted 1:50,000 - 100,000. |
| <b>Clonality</b>           | Polyclonal   |
| <b>MW</b>                  | 25 kDa   |
| <b>Uniprot ID</b>          | <a href="#">P15374</a>   |
| <b>NCBI</b>                | <a href="#">NP_005993</a>  |
| <b>Dilution Range</b>      | UCHL3 antibody can be used for detection of UCHL3 by ELISA at 1:1562500. UCHL3 antibody can be used for detection of UCHL3 by western blot at 1 µg/mL, and HRP conjugated secondary antibody should be diluted 1:50,000 - 100,000. |
| <b>Expiration Date</b>     | 12 months from date of receipt.  |



Antibody used in WB on Human MCF7 at 0.2...



Antibody used in IHC on Human Placenta.



Antibody used in WB on Zebrafish skin, l...