

---

## Product Datasheet

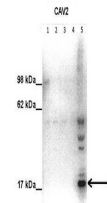
### CAV2 Antibody (orb1244185)

Description	CAV2 Antibody
<b>Species/Host</b>	Rabbit
<b>Reactivity</b>	Human
<b>Conjugation</b>	Unconjugated
<b>Tested Applications</b>	ELISA, WB
<b>Immunogen</b>	Antibody produced in rabbits immunized with a synthetic peptide corresponding a region of human CAV2.
<b>Target</b>	CAV2
<b>Preservatives</b>	Purified antibody supplied in 1x PBS buffer with 0.09% (w/v) sodium azide and 2% sucrose.
<b>Form/Appearance</b>	Liquid
<b>Concentration</b>	batch dependent
<b>Storage</b>	For short periods of storage (days) store at 4°C. For longer periods of storage, store CAV2 antibody at -20°C. As with any antibody avoid repeat freeze-thaw cycles.
<b>Note</b>	For research use only
<b>Application notes</b>	CAV2 antibody can be used for detection of CAV2 by ELISA at 1:62500. CAV2 antibody can be used for detection of CAV2 by western blot at 1 µg/mL, and HRP conjugated secondary antibody should be diluted 1:50,000 - 100,000.
<b>Clonality</b>	Polyclonal
<b>MW</b>	18 kDa
<b>Uniprot ID</b>	<a href="#">P51636</a>
<b>NCBI</b>	<a href="#">NP_001224</a>
<b>Dilution Range</b>	CAV2 antibody can be used for detection of CAV2 by ELISA at 1:62500. CAV2 antibody can be used for detection of CAV2 by western blot at 1 µg/mL, and HRP conjugated secondary antibody should be diluted 1:50,000 - 100,000.
<b>Expiration Date</b>	12 months from date of receipt.



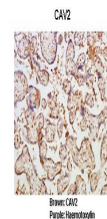
40 kDa  
30 kDa  
20 kDa

Antibody used in WB on Human Lung at 0.2...



See Immunoblot Data and Customer Feedback for more information

Antibody used in WB on Human placenta at...



Antibody used in IHC on Human placental ...