

---

## Product Datasheet

### RBM10 Antibody (orb1244121)

**Description**

RBM10 Antibody

**Species/Host**

Rabbit

**Reactivity**

Human, Mouse

**Conjugation**

Unconjugated

**Tested**

ELISA, IHC, WB

**Applications**
**Immunogen**

Antibody produced in rabbits immunized with a synthetic peptide corresponding a region of human RBM10.

**Target**

RBM10

**Preservatives**

Purified antibody supplied in 1x PBS buffer with 0.09% (w/v) sodium azide and 2% sucrose.

**Form/Appearance**

Liquid

**Concentration**

batch dependent

**Storage**

For short periods of storage (days) store at 4°C. For longer periods of storage, store RBM10 antibody at -20°C. As with any antibody avoid repeat freeze-thaw cycles.

**Note**

For research use only

**Application notes**

RBM10 antibody can be used for detection of RBM10 by ELISA at 1:1562500. RBM10 antibody can be used for detection of RBM10 by western blot at 1.4 µg/mL, and HRP conjugated secondary antibody should be diluted 1:50,000 - 100,000.

**Clonality**

Polyclonal

**MW**

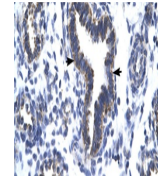
104 kDa

**Uniprot ID**
[P98175](#)
**NCBI**
[NP\\_005667](#)
**Dilution Range**

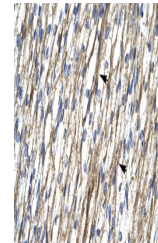
RBM10 antibody can be used for detection of RBM10 by ELISA at 1:1562500. RBM10 antibody can be used for detection of RBM10 by western blot at 1.4 µg/mL, and HRP conjugated secondary antibody should be diluted 1:50,000 - 100,000.

**Expiration Date**

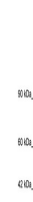
12 months from date of receipt.



Antibody used in IHC on Human Lung at 4...



Antibody used in IHC on Human Heart at 4...



Antibody used in WB on Human Daudi cells...