

---

## Product Datasheet

### RBPJ Antibody (orb1244098)

**Description**

RBPJ Antibody

**Species/Host**

Rabbit

**Reactivity**

Canine, Human

**Conjugation**

Unconjugated

**Tested**

ELISA, WB

**Applications**
**Immunogen**

Antibody produced in rabbits immunized with a synthetic peptide corresponding a region of human RBPJ.

**Target**

RBPJ

**Preservatives**

Purified antibody supplied in 1x PBS buffer with 0.09% (w/v) sodium azide and 2% sucrose.

**Form/Appearance**

Liquid

**Concentration**

batch dependent

**Storage**

For short periods of storage (days) store at 4°C. For longer periods of storage, store RBPJ antibody at -20°C. As with any antibody avoid repeat freeze-thaw cycles.

**Note**

For research use only

**Application notes**

RBPJ antibody can be used for detection of RBPJ by ELISA at 1:312500. RBPJ antibody can be used for detection of RBPJ by western blot at 0.25 µg/mL, and HRP conjugated secondary antibody should be diluted 1:50,000 - 100,000.

**Clonality**

Polyclonal

**MW**

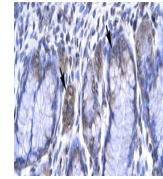
56 kDa, 54 kDa, 54 kDa, 54 kDa

**Uniprot ID**
[Q06330](#)
**NCBI**
[NP\\_005340](#)
**Dilution Range**

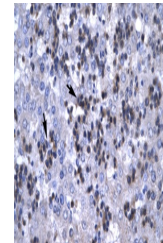
RBPJ antibody can be used for detection of RBPJ by ELISA at 1:312500. RBPJ antibody can be used for detection of RBPJ by western blot at 0.25 µg/mL, and HRP conjugated secondary antibody should be diluted 1:50,000 - 100,000.

**Expiration Date**

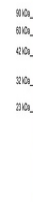
12 months from date of receipt.



Antibody used in IHC on Human Stomach.



Antibody used in IHC on Human Liver cell...



Antibody used in WB on Human HepG2 at 0....