
Product Datasheet

KLF9 Antibody (orb1244087)

Description

KLF9 Antibody

Species/Host

Rabbit

Reactivity

Human, Mouse, Rat

Conjugation

Unconjugated

Tested

ELISA, WB

Applications
Immunogen

Antibody produced in rabbits immunized with a synthetic peptide corresponding a region of human KLF9.

Target

KLF9

Preservatives

Purified antibody supplied in 1x PBS buffer with 0.09% (w/v) sodium azide and 2% sucrose.

Form/Appearance

Liquid

Concentration

batch dependent

Storage

For short periods of storage (days) store at 4°C. For longer periods of storage, store KLF9 antibody at -20°C. As with any antibody avoid repeat freeze-thaw cycles.

Note

For research use only

Application notes

KLF9 antibody can be used for detection of KLF9 by ELISA at 1:62500. KLF9 antibody can be used for detection of KLF9 by western blot at 1 µg/mL, and HRP conjugated secondary antibody should be diluted 1:50,000 - 100,000.

Clonality

Polyclonal

MW

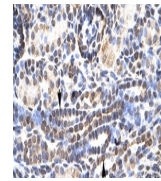
27 kDa

Uniprot ID
[Q13886](#)
NCBI
[NP_001197](#)
Dilution Range

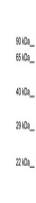
KLF9 antibody can be used for detection of KLF9 by ELISA at 1:62500. KLF9 antibody can be used for detection of KLF9 by western blot at 1 µg/mL, and HRP conjugated secondary antibody should be diluted 1:50,000 - 100,000.

Expiration Date

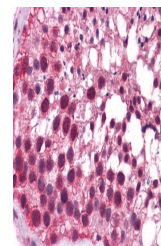
12 months from date of receipt.



Antibody used in IHC on Human kidney at ...



Antibody used in WB on Human Fetal Liver...



Antibody used in IHC on Human Testis.