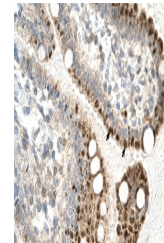

Product Datasheet

ZFP1 Antibody (orb1244044)

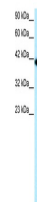
Description	ZFP1 Antibody
Species/Host	Rabbit
Reactivity	Human
Conjugation	Unconjugated
Tested Applications	ELISA, IHC, WB
Immunogen	Antibody produced in rabbits immunized with a synthetic peptide corresponding a region of human ZFP1.
Target	ZFP1
Preservatives	Purified antibody supplied in 1x PBS buffer with 0.09% (w/v) sodium azide and 2% sucrose.
Form/Appearance	Liquid
Concentration	batch dependent
Storage	For short periods of storage (days) store at 4°C. For longer periods of storage, store ZFP1 antibody at -20°C. As with any antibody avoid repeat freeze-thaw cycles.
Note	For research use only
Application notes	ZFP1 antibody can be used for detection of ZFP1 by ELISA at 1:62500. ZFP1 antibody can be used for detection of ZFP1 by western blot at 0.1-2.0 µg/mL, and HRP conjugated secondary antibody should be diluted 1:50,000 - 100,000.
Clonality	Polyclonal
MW	41 kDa
Uniprot ID	Q8N9F9
NCBI	NP_710155
Dilution Range	ZFP1 antibody can be used for detection of ZFP1 by ELISA at 1:62500. ZFP1 antibody can be used for detection of ZFP1 by western blot at 0.1-2.0 µg/mL, and HRP conjugated secondary antibody should be diluted 1:50,000 - 100,000.
Expiration Date	12 months from date of receipt.



Antibody used in IHC on Human Spermatozoph...



Antibody used in IHC on Human Intestine ...



Antibody used in WB on Human Jurkat 0.2-...