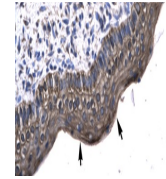
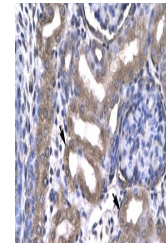

Product Datasheet

KIN Antibody (orb1244018)

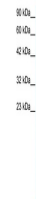
Description	KIN Antibody
Species/Host	Rabbit
Reactivity	Human
Conjugation	Unconjugated
Tested Applications	ELISA, IHC, WB
Immunogen	Antibody produced in rabbits immunized with a synthetic peptide corresponding a region of human KIN.
Target	KIN
Preservatives	Purified antibody supplied in 1x PBS buffer with 0.09% (w/v) sodium azide and 2% sucrose.
Form/Appearance	Liquid
Concentration	batch dependent
Storage	For short periods of storage (days) store at 4°C. For longer periods of storage, store KIN antibody at -20°C. As with any antibody avoid repeat freeze-thaw cycles.
Note	For research use only
Application notes	KIN antibody can be used for detection of KIN by ELISA at 1:2500. KIN antibody can be used for detection of KIN by western blot at 0.2-5.0 µg/mL, and HRP conjugated secondary antibody should be diluted 1:50,000 - 100,000.
Clonality	Polyclonal
MW	45 kDa
Uniprot ID	O60870
NCBI	NP_036443
Dilution Range	KIN antibody can be used for detection of KIN by ELISA at 1:2500. KIN antibody can be used for detection of KIN by western blot at 0.2-5.0 µg/mL, and HRP conjugated secondary antibody should be diluted 1:50,000 - 100,000.
Expiration Date	12 months from date of receipt.



Antibody used in IHC on Human Spermatozoph...



Antibody used in IHC on Human kidney lys...



Antibody used in WB on Human HepG2 at 0....