
Product Datasheet

GATA2 Antibody (orb1243995)

Description

GATA2 Antibody

Species/Host

Rabbit

Reactivity

Canine, Human, Mouse, Rat

Conjugation

Unconjugated

Tested

ELISA, IHC, WB

Applications
Immunogen

Antibody produced in rabbits immunized with a synthetic peptide corresponding a region of human GATA2.

Target

GATA2

Preservatives

Purified antibody supplied in 1x PBS buffer with 0.09% (w/v) sodium azide and 2% sucrose.

Form/Appearance

Liquid

Concentration

batch dependent

Storage

For short periods of storage (days) store at 4°C. For longer periods of storage, store GATA2 antibody at -20°C. As with any antibody avoid repeat freeze-thaw cycles.

Note

For research use only

Application notes

GATA2 antibody can be used for detection of GATA2 by ELISA at 1:1562500. GATA2 antibody can be used for detection of GATA2 by western blot at 1.0-2.0 µg/mL, and HRP conjugated secondary antibody should be diluted 1:50,000 - 100,000.

Clonality

Polyclonal

MW

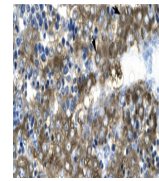
50 kDa

Uniprot ID
[P23769](#)
NCBI
[NP_116027](#)
Dilution Range

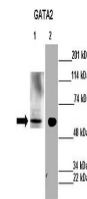
GATA2 antibody can be used for detection of GATA2 by ELISA at 1:1562500. GATA2 antibody can be used for detection of GATA2 by western blot at 1.0-2.0 µg/mL, and HRP conjugated secondary antibody should be diluted 1:50,000 - 100,000.

Expiration Date

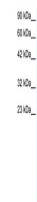
12 months from date of receipt.



Antibody used in IHC on Human Liver cell...



Antibody used in WB on Mouse liver, N2a ...



Antibody used in WB on Human K562 cells ...