
Product Datasheet

GLI2 Antibody (orb1243984)

Description

GLI2 Antibody

Species/Host

Rabbit

Reactivity

Human

Conjugation

Unconjugated

Tested

ELISA, IHC, WB

Applications
Immunogen

Antibody produced in rabbits immunized with a synthetic peptide corresponding a region of human GLI2.

Target

GLI2

Preservatives

Purified antibody supplied in 1x PBS buffer with 0.09% (w/v) sodium azide and 2% sucrose.

Form/Appearance

Liquid

Concentration

batch dependent

Storage

For short periods of storage (days) store at 4°C. For longer periods of storage, store GLI2 antibody at -20°C. As with any antibody avoid repeat freeze-thaw cycles.

Note

For research use only

Application notes

GLI2 antibody can be used for detection of GLI2 by ELISA at 1:312500. GLI2 antibody can be used for detection of GLI2 by western blot at 1.25 µg/mL, and HRP conjugated secondary antibody should be diluted 1:50,000 - 100,000.

Clonality

Polyclonal

MW

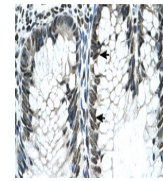
133 kDa

Uniprot ID
[P10070](#)
NCBI
[NP_084655](#)
Dilution Range

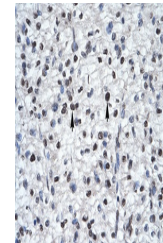
GLI2 antibody can be used for detection of GLI2 by ELISA at 1:312500. GLI2 antibody can be used for detection of GLI2 by western blot at 1.25 µg/mL, and HRP conjugated secondary antibody should be diluted 1:50,000 - 100,000.

Expiration Date

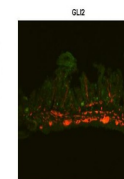
12 months from date of receipt.



Antibody used in IHC on Human Intestine ...



Antibody used in IHC on Human Heart at 4...


 Green: GLI2 antibody
Red: Nuclei (DAPI)

See IHC 2 Data and Customer Feedback for more information

Antibody used in IHC on Mouse Gut at 1:5...