

---

## Product Datasheet

### GTF2I Antibody (orb1243975)

**Description**

GTF2I Antibody

**Species/Host**

Rabbit

**Reactivity**

Canine, Human, Mouse

**Conjugation**

Unconjugated

**Tested**

ELISA, WB

**Applications**
**Immunogen**

Antibody produced in rabbits immunized with a synthetic peptide corresponding a region of human GTF2I.

**Target**

GTF2I

**Preservatives**

Purified antibody supplied in 1x PBS buffer with 0.09% (w/v) sodium azide and 2% sucrose.

**Form/Appearance**

Liquid

**Concentration**

batch dependent

**Storage**

For short periods of storage (days) store at 4°C. For longer periods of storage, store GTF2I antibody at -20°C. As with any antibody avoid repeat freeze-thaw cycles.

**Note**

For research use only

**Application notes**

GTF2I antibody can be used for detection of GTF2I by ELISA at 1:312500. GTF2I antibody can be used for detection of GTF2I by western blot at 2.5 µg/mL, and HRP conjugated secondary antibody should be diluted 1:50,000 - 100,000.

**Clonality**

Polyclonal

**MW**

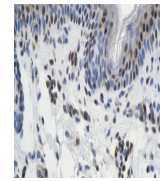
108 kDa, 112 kDa, 110 kDa, 110 kDa

**Uniprot ID**
[Q75M85](#)
**NCBI**
[NP\\_001509](#)
**Dilution Range**

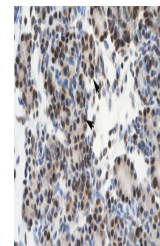
GTF2I antibody can be used for detection of GTF2I by ELISA at 1:312500. GTF2I antibody can be used for detection of GTF2I by western blot at 2.5 µg/mL, and HRP conjugated secondary antibody should be diluted 1:50,000 - 100,000.

**Expiration Date**

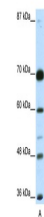
12 months from date of receipt.



Antibody used in IHC on Human Skin at 4....



Antibody used in IHC on Human Pancreas a...



Antibody used in WB on Human HepG2 at 2....