
Product Datasheet

TFCP2L1 Antibody (orb1243974)

Description

TFCP2L1 Antibody

Species/Host

Rabbit

Reactivity

Human

Conjugation

Unconjugated

Tested

ELISA, WB

Applications
Immunogen

Antibody produced in rabbits immunized with a synthetic peptide corresponding a region of human TFCP2L1.

Target

TFCP2L1

Preservatives

Purified antibody supplied in 1x PBS buffer with 0.09% (w/v) sodium azide and 2% sucrose.

Form/Appearance

Liquid

Concentration

batch dependent

Storage

For short periods of storage (days) store at 4°C. For longer periods of storage, store TFCP2L1 antibody at -20°C. As with any antibody avoid repeat freeze-thaw cycles.

Note

For research use only

Application notes

TFCP2L1 antibody can be used for detection of TFCP2L1 by ELISA at 1:312500. TFCP2L1 antibody can be used for detection of TFCP2L1 by western blot at 1 µg/mL, and HRP conjugated secondary antibody should be diluted 1:50,000 - 100,000.

Clonality

Polyclonal

MW

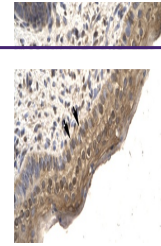
54 kDa

Uniprot ID
[Q9NZ16](#)
NCBI
[NP_055368](#)
Dilution Range

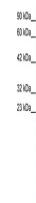
TFCP2L1 antibody can be used for detection of TFCP2L1 by ELISA at 1:312500. TFCP2L1 antibody can be used for detection of TFCP2L1 by western blot at 1 µg/mL, and HRP conjugated secondary antibody should be diluted 1:50,000 - 100,000.

Expiration Date

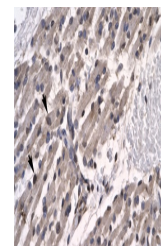
12 months from date of receipt.



Antibody used in IHC on Human Spermatozoph...



Antibody used in WB on Human HepG2 at 0....



Antibody used in IHC on Human Muscle.