
Product Datasheet

HCLS1 Antibody (orb1243969)

Description

HCLS1 Antibody

Species/Host

Rabbit

Reactivity

Human

Conjugation

Unconjugated

Tested

ELISA, IHC, WB

Applications
Immunogen

Antibody produced in rabbits immunized with a synthetic peptide corresponding a region of human HCLS1.

Target

HCLS1

Preservatives

Purified antibody supplied in 1x PBS buffer with 0.09% (w/v) sodium azide and 2% sucrose.

Form/Appearance

Liquid

Concentration

batch dependent

Storage

For short periods of storage (days) store at 4°C. For longer periods of storage, store HCLS1 antibody at -20°C. As with any antibody avoid repeat freeze-thaw cycles.

Note

For research use only

Application notes

HCLS1 antibody can be used for detection of HCLS1 by ELISA at 1:312500. HCLS1 antibody can be used for detection of HCLS1 by western blot at 1.25 µg/mL, and HRP conjugated secondary antibody should be diluted 1:50,000 - 100,000.

Clonality

Polyclonal

MW

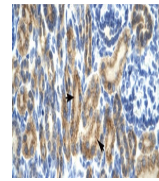
54 kDa

Uniprot ID
[P14317](#)
NCBI
[NP_005326](#)
Dilution Range

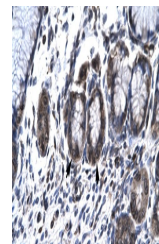
HCLS1 antibody can be used for detection of HCLS1 by ELISA at 1:312500. HCLS1 antibody can be used for detection of HCLS1 by western blot at 1.25 µg/mL, and HRP conjugated secondary antibody should be diluted 1:50,000 - 100,000.

Expiration Date

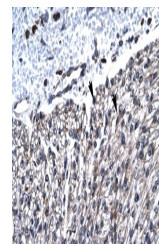
12 months from date of receipt.



Antibody used in IHC on Human kidney at ...



Antibody used in IHC on Human Stomach at...



Antibody used in IHC on Human Heart at 4...