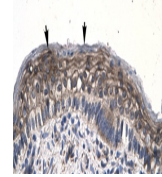
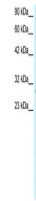

Product Datasheet

JMJD8 Antibody (orb1243955)

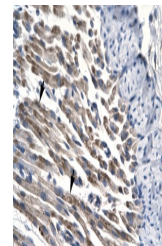
Description	JMJD8 Antibody
Species/Host	Rabbit
Reactivity	Human
Conjugation	Unconjugated
Tested Applications	ELISA, WB
Immunogen	Antibody produced in rabbits immunized with a synthetic peptide corresponding a region of human LOC339123.
Target	JMJD8
Preservatives	Purified antibody supplied in 1x PBS buffer with 0.09% (w/v) sodium azide and 2% sucrose.
Form/Appearance	Liquid
Concentration	batch dependent
Storage	For short periods of storage (days) store at 4°C. For longer periods of storage, store LOC339123 antibody at -20°C. As with any antibody avoid repeat freeze-thaw cycles.
Note	For research use only
Application notes	LOC339123 antibody can be used for detection of LOC339123 by ELISA at 1:1562500. LOC339123 antibody can be used for detection of LOC339123 by western blot at 0.25 µg/mL, and HRP conjugated secondary antibody should be diluted 1:50,000 - 100,000.
Clonality	Polyclonal
MW	32 kDa
Uniprot ID	B2RNS7
NCBI	NP_001005920
Dilution Range	LOC339123 antibody can be used for detection of LOC339123 by ELISA at 1:1562500. LOC339123 antibody can be used for detection of LOC339123 by western blot at 0.25 µg/mL, and HRP conjugated secondary antibody should be diluted 1:50,000 - 100,000.
Expiration Date	12 months from date of receipt.



Antibody used in IHC on Human Spermatoph...



Antibody used in WB on Human Jurkat 0.2-...



Antibody used in IHC on Human Muscle.