
Product Datasheet

ZNF365 Antibody (orb1243881)

Description

ZNF365 Antibody

Species/Host

Rabbit

Reactivity

Human, Mouse, Rat

Conjugation

Unconjugated

Tested

ELISA, IHC, WB

Applications
Immunogen

Antibody produced in rabbits immunized with a synthetic peptide corresponding a region of human ZNF365.

Target

ZNF365

Preservatives

Purified antibody supplied in 1x PBS buffer with 0.09% (w/v) sodium azide and 2% sucrose.

Form/Appearance

Liquid

Concentration

batch dependent

Storage

For short periods of storage (days) store at 4°C. For longer periods of storage, store ZNF365 antibody at -20°C. As with any antibody avoid repeat freeze-thaw cycles.

Note

For research use only

Application notes

ZNF365 antibody can be used for detection of ZNF365 by ELISA at 1:62500. ZNF365 antibody can be used for detection of ZNF365 by western blot at 1.0-10.0 µg/mL, and HRP conjugated secondary antibody should be diluted 1:50,000 - 100,000.

Clonality

Polyclonal

MW

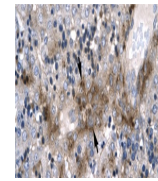
36 kDa, 53 kDa

Uniprot ID
[Q70YC4](#)
NCBI
[NP_955522](#)
Dilution Range

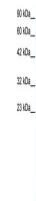
ZNF365 antibody can be used for detection of ZNF365 by ELISA at 1:62500. ZNF365 antibody can be used for detection of ZNF365 by western blot at 1.0-10.0 µg/mL, and HRP conjugated secondary antibody should be diluted 1:50,000 - 100,000.

Expiration Date

12 months from date of receipt.



Antibody used in IHC on Human Liver at 4...



Antibody used in WB on Human HepG2 at 0....



Antibody used in WB on Human HepG2 at 0....