
Product Datasheet

SIRT5 Antibody (orb1243840)

Description

SIRT5 Antibody

Species/Host

Rabbit

Reactivity

Human

Conjugation

Unconjugated

Tested

ELISA, IHC, WB

Applications
Immunogen

Antibody produced in rabbits immunized with a synthetic peptide corresponding to a region of human SIRT5.

Target

SIRT5

Preservatives

Purified antibody supplied in 1x PBS buffer with 0.09% (w/v) sodium azide and 2% sucrose.

Form/Appearance

Liquid

Concentration

batch dependent

Storage

For short periods of storage (days) store at 4°C. For longer periods of storage, store SIRT5 antibody at -20°C. As with any antibody avoid repeat freeze-thaw cycles.

Note

For research use only

Application notes

SIRT5 antibody can be used for detection of SIRT5 by ELISA at 1:312500. SIRT5 antibody can be used for detection of SIRT5 by western blot at 2.0/mL.

Clonality

Polyclonal

MW

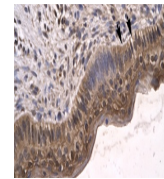
32 kDa

Uniprot ID
[Q9NXA8](#)
NCBI
[NP_112534](#)
Dilution Range

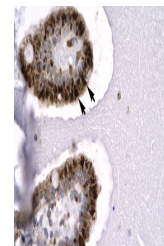
SIRT5 antibody can be used for detection of SIRT5 by ELISA at 1:312500. SIRT5 antibody can be used for detection of SIRT5 by western blot at 2.0/mL.

Expiration Date

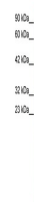
12 months from date of receipt.



Antibody used in IHC on Human Spermatozoph...



Antibody used in IHC on Human Intestine.



Antibody used in WB on Human HepG2 at 0....