
Product Datasheet

PAX7 Antibody (orb1243838)

Description

PAX7 Antibody

Species/Host

Rabbit

Reactivity

Canine, Human, Mouse, Rat

Conjugation

Unconjugated

Tested

ELISA, IHC, WB

Applications
Immunogen

Antibody produced in rabbits immunized with a synthetic peptide corresponding a region of human PAX7.

Target

PAX7

Preservatives

Purified antibody supplied in 1x PBS buffer with 0.09% (w/v) sodium azide and 2% sucrose.

Form/Appearance

Liquid

Concentration

batch dependent

Storage

For short periods of storage (days) store at 4°C. For longer periods of storage, store PAX7 antibody at -20°C. As with any antibody avoid repeat freeze-thaw cycles.

Note

For research use only

Application notes

PAX7 antibody can be used for detection of PAX7 by ELISA at 1:312500. PAX7 antibody can be used for detection of PAX7 by western blot at 0.05 µg/mL, and HRP conjugated secondary antibody should be diluted 1:50,000 - 100,000.

Clonality

Polyclonal

MW

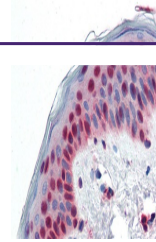
57 kDa, 57 kDa

Uniprot ID
[P23759](#)
NCBI
[NP_002575](#)
Dilution Range

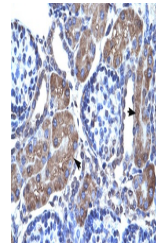
PAX7 antibody can be used for detection of PAX7 by ELISA at 1:312500. PAX7 antibody can be used for detection of PAX7 by western blot at 0.05 µg/mL, and HRP conjugated secondary antibody should be diluted 1:50,000 - 100,000.

Expiration Date

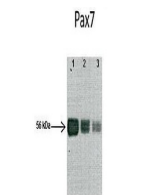
12 months from date of receipt.



Antibody used in IHC on Human Skin at 5....



Antibody used in IHC on Human kidney at ...



See Immunoblot Data and customer Feedback for more information

Antibody used in WB on Mouse skeletal mu...