
Product Datasheet

NCOR1 Antibody (orb1243811)

Description

NCOR1 Antibody

Species/Host

Rabbit

Reactivity

Canine, Human, Mouse

Conjugation

Unconjugated

Tested

ELISA, WB

Applications
Immunogen

Antibody produced in rabbits immunized with a synthetic peptide corresponding a region of human NCOR1.

Target

NCOR1

Preservatives

Purified antibody supplied in 1x PBS buffer with 0.09% (w/v) sodium azide and 2% sucrose.

Form/Appearance

Liquid

Concentration

batch dependent

Storage

For short periods of storage (days) store at 4°C. For longer periods of storage, store NCOR1 antibody at -20°C. As with any antibody avoid repeat freeze-thaw cycles.

Note

For research use only

Application notes

NCOR1 antibody can be used for detection of NCOR1 by ELISA at 1:62500. NCOR1 antibody can be used for detection of NCOR1 by western blot at 0.5 µg/mL, and HRP conjugated secondary antibody should be diluted 1:50,000 - 100,000.

Clonality

Polyclonal

MW

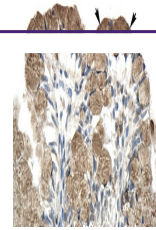
104 kDa

Uniprot ID
[Q86YY0](#)
NCBI
[Q86YY0](#)
Dilution Range

NCOR1 antibody can be used for detection of NCOR1 by ELISA at 1:62500. NCOR1 antibody can be used for detection of NCOR1 by western blot at 0.5 µg/mL, and HRP conjugated secondary antibody should be diluted 1:50,000 - 100,000.

Expiration Date

12 months from date of receipt.



Antibody used in IHC on Human Intestine.



Antibody used in WB on Human Small Intes...