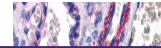

Product Datasheet

SUZ12 Antibody (orb1243804)

Description

SUZ12 Antibody


Species/Host

Rabbit

Reactivity

Human, Mouse

Conjugation

Unconjugated

Tested Applications

ELISA, WB

Applications

Antibody used in IHC on Human Placenta.

Immunogen

Antibody produced in rabbits immunized with a synthetic peptide corresponding a region of human SUZ12.

Target

SUZ12

Preservatives

Purified antibody supplied in 1x PBS buffer with 0.09% (w/v) sodium azide and 2% sucrose.

Form/Appearance

Liquid

Concentration

batch dependent

Storage

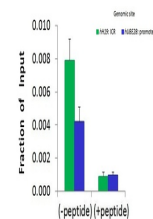
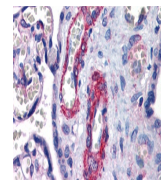
For short periods of storage (days) store at 4°C. For longer periods of storage, store SUZ12 antibody at -20°C. As with any antibody avoid repeat freeze-thaw cycles.

Note

For research use only

Application notes

SUZ12 antibody can be used for detection of SUZ12 by ELISA at 1:312500. SUZ12 antibody can be used for detection of SUZ12 by western blot at 1 µg/mL, and HRP conjugated secondary antibody should be diluted 1:50,000 - 100,000.



Antibody used in CHIP on HCT116 Cells.

Clonality

Polyclonal

MW

83 kDa

Uniprot ID
[Q15022](https://www.uniprot.org/uniprot/Q15022)
NCBI
[NP_056170](https://www.ncbi.nlm.nih.gov/nuccore/NP_056170)
Dilution Range

SUZ12 antibody can be used for detection of SUZ12 by ELISA at 1:312500. SUZ12 antibody can be used for detection of SUZ12 by western blot at 1 µg/mL, and HRP conjugated secondary antibody should be diluted 1:50,000 - 100,000.

Expiration Date

12 months from date of receipt.



Antibody used in WB on Human HeLa cells ...