
Product Datasheet

TBX21 Antibody (orb1243779)

Description

TBX21 Antibody

Species/Host

Rabbit

Reactivity

Human

Conjugation

Unconjugated

Tested

ELISA, IHC, WB

Applications
Immunogen

Antibody produced in rabbits immunized with a synthetic peptide corresponding a region of human TBX21.

Target

TBX21

Preservatives

Purified antibody supplied in 1x PBS buffer with 0.09% (w/v) sodium azide and 2% sucrose.

Form/Appearance

Liquid

Concentration

batch dependent

Storage

For short periods of storage (days) store at 4°C. For longer periods of storage, store TBX21 antibody at -20°C. As with any antibody avoid repeat freeze-thaw cycles.

Note

For research use only

Application notes

TBX21 antibody can be used for detection of TBX21 by ELISA at 1:312500. TBX21 antibody can be used for detection of TBX21 by western blot at 1.0-2.0 µg/mL, and HRP conjugated secondary antibody should be diluted 1:50,000 - 100,000.

Clonality

Polyclonal

MW

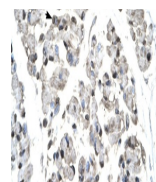
58 kDa

Uniprot ID
[Q9UL17](#)
NCBI
[NP_037483](#)
Dilution Range

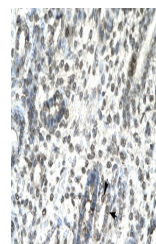
TBX21 antibody can be used for detection of TBX21 by ELISA at 1:312500. TBX21 antibody can be used for detection of TBX21 by western blot at 1.0-2.0 µg/mL, and HRP conjugated secondary antibody should be diluted 1:50,000 - 100,000.

Expiration Date

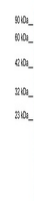
12 months from date of receipt.



Antibody used in IHC on Human Skeletal M...



Antibody used in IHC on Human kidney.



Antibody used in WB on Human Liver at 0....