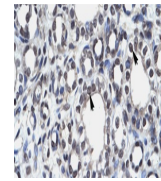
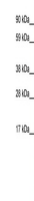

Product Datasheet

AIRE Antibody (orb1243765)

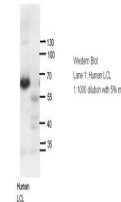
Description	AIRE Antibody
Species/Host	Rabbit
Reactivity	Human, Mouse, Rat
Conjugation	Unconjugated
Tested Applications	ELISA, WB
Immunogen	Antibody produced in rabbits immunized with a synthetic peptide corresponding a region of human AIRE.
Target	AIRE
Preservatives	Purified antibody supplied in 1x PBS buffer with 0.09% (w/v) sodium azide and 2% sucrose.
Form/Appearance	Liquid
Concentration	batch dependent
Storage	For short periods of storage (days) store at 4°C. For longer periods of storage, store AIRE antibody at -20°C. As with any antibody avoid repeat freeze-thaw cycles.
Note	For research use only
Application notes	AIRE antibody can be used for detection of AIRE by ELISA at 1:62500. AIRE antibody can be used for detection of AIRE by western blot at 0.5 µg/mL, and HRP conjugated secondary antibody should be diluted 1:50,000 - 100,000.
Clonality	Polyclonal
MW	58 kDa
Uniprot ID	O43918
NCBI	NP_000374
Dilution Range	AIRE antibody can be used for detection of AIRE by ELISA at 1:62500. AIRE antibody can be used for detection of AIRE by western blot at 0.5 µg/mL, and HRP conjugated secondary antibody should be diluted 1:50,000 - 100,000.
Expiration Date	12 months from date of receipt.



Antibody used in IHC on Human kidney at ...



Antibody used in WB on Human Liver at 0....



Antibody used in WB on human LCL at 1:10...