

---

## Product Datasheet

### CITED1 Antibody (orb1243753)

**Description**

CITED1 Antibody

**Species/Host**

Rabbit

**Reactivity**

Human

**Conjugation**

Unconjugated

**Tested Applications**

ELISA, IHC, WB

**Immunogen**

Antibody produced in rabbits immunized with a synthetic peptide corresponding a region of human CITED1.

**Target**

CITED1

**Preservatives**

Purified antibody supplied in 1x PBS buffer with 0.09% (w/v) sodium azide and 2% sucrose.

**Form/Appearance**

Liquid

**Concentration**

batch dependent

**Storage**

For short periods of storage (days) store at 4°C. For longer periods of storage, store CITED1 antibody at -20°C. As with any antibody avoid repeat freeze-thaw cycles.

**Note**

For research use only

**Application notes**

CITED1 antibody can be used for detection of CITED1 by ELISA at 1:312500. CITED1 antibody can be used for detection of CITED1 by western blot at 0.2-2.0 µg/mL, and HRP conjugated secondary antibody should be diluted 1:50,000 - 100,000.

**Clonality**

Polyclonal

**MW**

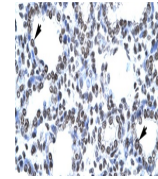
20 kDa

**Uniprot ID**
[Q99966](#)
**NCBI**
[NP\\_004134](#)
**Dilution Range**

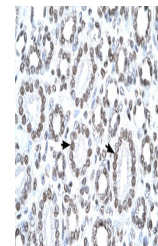
CITED1 antibody can be used for detection of CITED1 by ELISA at 1:312500. CITED1 antibody can be used for detection of CITED1 by western blot at 0.2-2.0 µg/mL, and HRP conjugated secondary antibody should be diluted 1:50,000 - 100,000.

**Expiration Date**

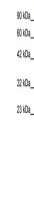
12 months from date of receipt.



Antibody used in IHC on Human Lung.



Antibody used in IHC on Human kidney.



Antibody used in WB on Human HepG2 at 0....