
Product Datasheet

ACSL1 Antibody (orb1243720)

Description

ACSL1 Antibody

Species/Host

Rabbit

Reactivity

Human

Conjugation

Unconjugated

Tested

ELISA, WB

Applications
Immunogen

Antibody produced in rabbits immunized with a synthetic peptide corresponding a region of human ACSL1.

Target

ACSL1

Preservatives

Purified antibody supplied in 1x PBS buffer with 0.09% (w/v) sodium azide and 2% sucrose.

Form/Appearance

Liquid

Concentration

batch dependent

Storage

For short periods of storage (days) store at 4°C. For longer periods of storage, store ACSL1 antibody at -20°C. As with any antibody avoid repeat freeze-thaw cycles.

Note

For research use only

Application notes

ACSL1 antibody can be used for detection of ACSL1 by ELISA at 1:62500. ACSL1 antibody can be used for detection of ACSL1 by western blot at 1 µg/mL, and HRP conjugated secondary antibody should be diluted 1:50,000 - 100,000.

Clonality

Polyclonal

MW

78 kDa

Uniprot ID
[P33121](#)
NCBI
[NP_001986](#)
Dilution Range

ACSL1 antibody can be used for detection of ACSL1 by ELISA at 1:62500. ACSL1 antibody can be used for detection of ACSL1 by western blot at 1 µg/mL, and HRP conjugated secondary antibody should be diluted 1:50,000 - 100,000.

Expiration Date

12 months from date of receipt.

 910₀

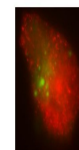
 410₀

 310₀

 210₀

Antibody used in WB on Human MCF-7 at 0....

ACSL1

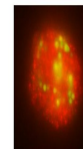


Gene ACSL1 Antibody

See PC1 Data and customer Feedback for more information

Antibody used in IHC on Human THP-1 at: ...

ACSL1



Gene ACSL1 Antibody

See PC2 Data and customer Feedback for more information

Antibody used in IHC on Human THP-1 at: ...