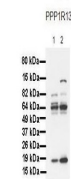

Product Datasheet

PPP1R13L Antibody (orb1243708)

Description	PPP1R13L Antibody
Species/Host	Rabbit
Reactivity	Human
Conjugation	Unconjugated
Tested Applications	ELISA, WB
Immunogen	Antibody produced in rabbits immunized with a synthetic peptide corresponding a region of human PPP1R13L.
Target	PPP1R13L
Preservatives	Purified antibody supplied in 1x PBS buffer with 0.09% (w/v) sodium azide and 2% sucrose.
Form/Appearance	Liquid
Concentration	batch dependent
Storage	For short periods of storage (days) store at 4°C. For longer periods of storage, store PPP1R13L antibody at -20°C. As with any antibody avoid repeat freeze-thaw cycles.
Note	For research use only
Application notes	PPP1R13L antibody can be used for detection of PPP1R13L by ELISA at 1:62500. PPP1R13L antibody can be used for detection of PPP1R13L by western blot at 0.25 µg/mL, and HRP conjugated secondary antibody should be diluted 1:50,000 - 100,000.
Clonality	Polyclonal
MW	89 kDa
Uniprot ID	Q8WUF5
NCBI	NP_006654
Dilution Range	PPP1R13L antibody can be used for detection of PPP1R13L by ELISA at 1:62500. PPP1R13L antibody can be used for detection of PPP1R13L by western blot at 0.25 µg/mL, and HRP conjugated secondary antibody should be diluted 1:50,000 - 100,000.
Expiration Date	12 months from date of receipt.

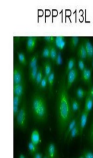


Antibody used in WB on Transfected 293T ...



See Membrane 1 Data and Customer Feedback for more information

Antibody used in WB on Human cell lines ...



Green: PPP1R13L
Blue: DAPI

See IHC 1 Data and Customer Feedback for more information

Antibody used in IHC on Human A549 at 1:...