
Product Datasheet

KDM3A Antibody (orb1243681)

Description

KDM3A Antibody

Species/Host

Rabbit

Reactivity

Canine, Human, Mouse

Conjugation

Unconjugated

Tested

ELISA, IHC, WB

Applications
Immunogen

Antibody produced in rabbits immunized with a synthetic peptide corresponding a region of human JMJD1A.

Target

KDM3A

Preservatives

Purified antibody supplied in 1x PBS buffer with 0.09% (w/v) sodium azide and 2% sucrose.

Form/Appearance

Liquid

Concentration

batch dependent

Storage

For short periods of storage (days) store at 4°C. For longer periods of storage, store JMJD1A antibody at -20°C. As with any antibody avoid repeat freeze-thaw cycles.

Note

For research use only

Application notes

JMJD1A antibody can be used for detection of JMJD1A by ELISA at 1:62500. JMJD1A antibody can be used for detection of JMJD1A by western blot at 1.0 µg/mL, and HRP conjugated secondary antibody should be diluted 1:50,000 - 100,000.

Clonality

Polyclonal

MW

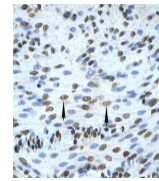
147 kDa

Uniprot ID
[Q53S72](#)
NCBI
[NP_060903](#)
Dilution Range

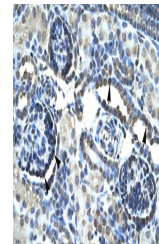
JMJD1A antibody can be used for detection of JMJD1A by ELISA at 1:62500. JMJD1A antibody can be used for detection of JMJD1A by western blot at 1.0 µg/mL, and HRP conjugated secondary antibody should be diluted 1:50,000 - 100,000.

Expiration Date

12 months from date of receipt.



Antibody used in IHC on Human Smooth Mus...



Antibody used in IHC on Human kidney.



Antibody used in WB on Human Jurkat 1 ug...