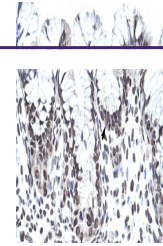


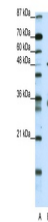
Product Datasheet

PHF1 Antibody (orb1243654)

Description	PHF1 Antibody
Species/Host	Rabbit
Reactivity	Canine, Human, Rat
Conjugation	Unconjugated
Tested Applications	ELISA, IHC, WB
Immunogen	Antibody produced in rabbits immunized with a synthetic peptide corresponding a region of human PHF1.
Target	PHF1
Preservatives	Purified antibody supplied in 1x PBS buffer with 0.09% (w/v) sodium azide and 2% sucrose.
Form/Appearance	Liquid
Concentration	batch dependent
Storage	For short periods of storage (days) store at 4°C. For longer periods of storage, store PHF1 antibody at -20°C. As with any antibody avoid repeat freeze-thaw cycles.
Note	For research use only
Application notes	PHF1 antibody can be used for detection of PHF1 by ELISA at 1:1562500. PHF1 antibody can be used for detection of PHF1 by western blot at 1.25 µg/mL, and HRP conjugated secondary antibody should be diluted 1:50,000 - 100,000.
Clonality	Polyclonal
MW	62 kDa
Uniprot ID	O43189
NCBI	NP_077084
Dilution Range	PHF1 antibody can be used for detection of PHF1 by ELISA at 1:1562500. PHF1 antibody can be used for detection of PHF1 by western blot at 1.25 µg/mL, and HRP conjugated secondary antibody should be diluted 1:50,000 - 100,000.
Expiration Date	12 months from date of receipt.



Antibody used in IHC on Human Stomach.



Antibody used in WB on Human 293T at 1.2...